

## INSTITUTIONAL SOCIAL RESPONSIBILITY (ISR)

This institution believes that our role as an educational institution is to provide social awareness as well as cultivate humanity, imparting of knowledge and skills to our students.

### OBJECTIVE

- ✓ To develop Ethical and Moral Values among the youth.
- ✓ To create social awareness and inculcate social responsibility.
- ✓ To develop Empathy in the youth

### MISSION

” Our mission of ISR works for Upliftment, Empowerment and Betterment of the Society “

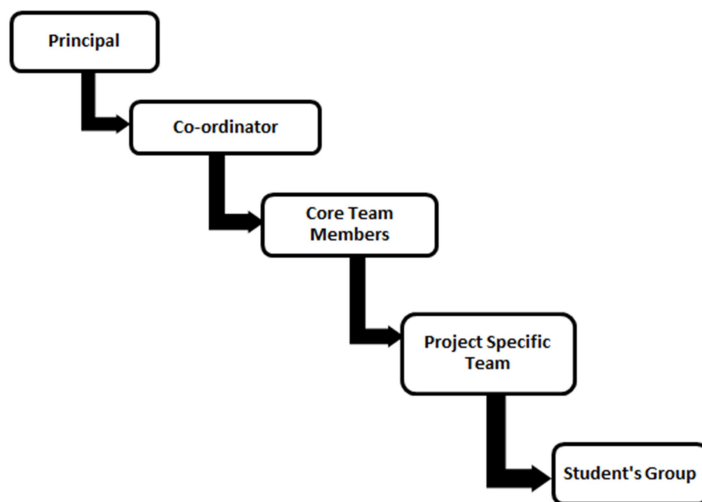
### VISION

- ✓ To be a part of a social development.
- ✓ To make an effort to connect the youth with the society.
- ✓ To bridge the gap between Institution and Holistic development of the society.
- ✓ Don't do it for others, Do it for your self-satisfaction.

### ISR COMMITTEE

The Institution has an ISR committee with Co-ordinator, core team members, project specific team and group of students under the guidance of Principal.

- ❖ Principal
- ❖ Co-ordinator
- ❖ Core Team Members
- ❖ Project Specific Team
- ❖ Student's Group



### ROLE OF CORDINATOR

1. Preparing Action Plan of upcoming year.
2. Coordinating the Programs.



## **INSTITUTIONAL SOCIAL RESPONSIBILITY (ISR)**

3. Implementing the Programs.
4. Monitoring the Programs.
5. Consolidation of Reports
6. Review of Programs done.

## **SAMARPAN**

### **Student's Allegiance for Making Awareness in Rural Prosper and Activation Naturally**

(ग्रामीण समृद्धि और सक्रियता में जागरूकता बनाने के लिए छात्र की निष्ठा)

SAMARPAN is a well-structured rural development programme under the banner of ISR. The mission of SAMARPAN is “To empower villages” to bring about sustainable development and positive social transformation. The SAMARPAN is a comprehensive package for capacity building of students and development of rural community. The SAMARPAN programme provides skills and opportunities for students to do things differently and achieve optimum benefits for their own development and for the welfare of the rural community.

This Rural Community Development program is designed not to be a standalone programme but is also integrated into the academic programme for personal development of the students. The SAMARPAN works to expose the students to rural community and create awareness among them about the problems of the rural people. It also takes measures to help the village community to become self-reliant and sustain their eco system. The students of the undergraduate courses shall also be integrated with various activities of SAMARPAN in the academic session to upscale students’ involvement in rural community enrichment.

## **FUNCTIONAL ORGANIZATION**

The SAMARPAN programme is co-ordinated by a full time co-coordinator who bridges among the villagers, authorities and the college. A core committee constituted by selected faculty members with external expert co-ordinates the whole process.

## **UNIQUENESS**

The SAMARPAN programme is an institutionalized. All the activities were integrated with of Service Oriented Courses viz., NSS, NCC, RED CROSS to UGC funded major and minor

## INSTITUTIONAL SOCIAL RESPONSIBILITY (ISR)

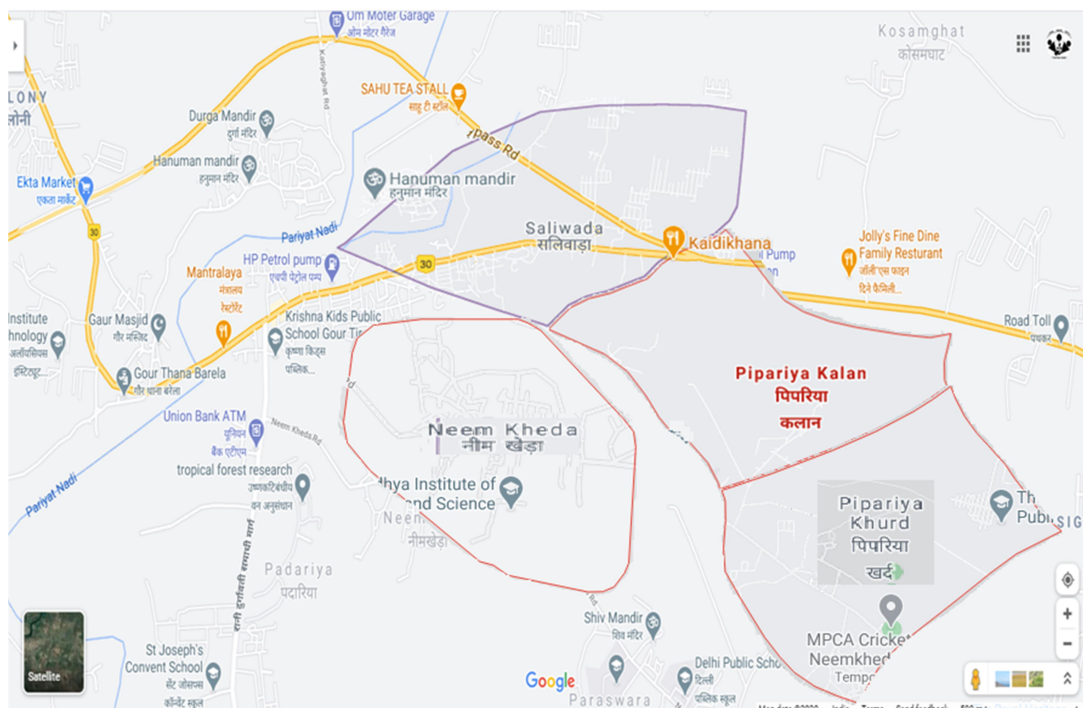
research Project. In this program all the Under Graduate and Post Graduate students and all teaching faculties are involves directly or indirectly. Every year the team of ISR after reviewing the program update the entire programme. This program improved self-awareness, self-esteem and Emotional Intelligence.

On the theme of GRAMEEN UNNATI...DESH KI PRAGATI, It works in mostly rural regions to promote literacy and increase community engagement in projects to promote health and hygiene, child welfare, human rights and democracy, the environment, and economic development. The institution adopted 5 villages.

### ADOPTED VILLAGES AND THEIR PANCHYATS

SR. NO.	NAME OF VILLAGES	GRAM PANCHAYAT
1.	<b>SALIWADA VILLAGE</b>	SALIWADA PANCHAYAT
2.	<b>NEEMKHEDA VILLAGE</b>	NEEMKHEDA PANCHAYAT
3.	<b>PIPARIYA KALAN VILLAGE</b>	PIPARIYA KALAN PANCHAYAT
4.	<b>PIPARIYA KHURD VILLAGE</b>	PIPARIYA KURD PANCHAYAT
5.	<b>KHAMPARIYA VILLAGE</b>	KHAMPARIYA PANCHAYAT

### MAP OF ADOPTED VILLAGES AND PANCHYAT



## **INSTITUTIONAL SOCIAL RESPONSIBILITY (ISR)**

### **POLICIES**

The Institution focus areas are Rural Transformation, Education and Health, Community Services and charity, Gender-Equality, Women Empowerment and Environmental Sustainability to help villagers and communities the opportunity gap. Most of the ISR activities of the Institution are carried out under these 8 policies. Our commitment towards social responsibility is being achieved through the following means

1. Rural Transformation (Rural Upliftment)
2. Education (Promotion of Education)
3. Environment (Environmental Sustainability)
4. Health (Health and Hygiene)
5. Sharing and Caring (Charity)
6. Community Services
7. Women Empowerment

### **1. RURAL TRANSFORMATION (UPLIFTMENT)**

ISR is the key pillar of our institution. It has been addressing the challenges of rural Upliftment programmes. Key initiatives in this programme include spreading awareness about challenges and opportunities in targeted villages. The target group for the project covers rural communities in general but will more on vulnerable marginalized group such as literate youth and children, women, subsistence farmers, unorganized labourers and tribal. Keeping in view the need for Upliftment and enhancement of the quality of the life of the people in the targeted villages. The college proposed to undertake the following projects – water harvesting, tree plantation, vermicomposting, health- hygiene and sanitation, entrepreneurship, water conservation, ICT based computer awareness in remote schools.

- The students were sent to targeted villages to spread awareness about water conservation and water harvesting techniques.
- The institute have visited Gram Pipariya kalan, pipariya khurd, Khamariya, Neem kheda and Saliwada rural schools to teach the fundamentals of computer to the youth and children in the villages.
- Also entrepreneurship skills have been developed so that they could start their own business.

Together these initiatives help achieve the SDGs (No Poverty, No Hunger, Clean Water and Sanitation and Reduced Inequalities).



## **INSTITUTIONAL SOCIAL RESPONSIBILITY (ISR)**

### **ACTIVITIES OF RURAL UPLIFTMENT**

Under the banner of ISR the team SAMARPAN conducted various rural development programs in our targeted villages. These are

1. Drive on Cleanliness
2. Wall Paintings
3. Removed Mud from Road

#### **Drive on Cleanliness**

To clean the drainage systems of the village, Gram Pipariyakala, Gour, Jabalpur, NSS (National Service Scheme) Students taken a proactive step. Aiming to fulfil Mahatma Gandhi's vision of Clean India, our college often organizes cleanliness drives in varied areas of Jabalpur district under the Swachh Bharat initiative that seeks to create a clean India. They cleaned all the drainage systems of the village.



## INSTITUTIONAL SOCIAL RESPONSIBILITY (ISR)



### Wall Paintings

To make clean and attractive atmosphere of the school campus of the village, Gram Pipariyakala, Gour, Jabalpur, NSS (National Service Scheme) Students painted the walls of the school.





## INSTITUTIONAL SOCIAL RESPONSIBILITY (ISR)



### REMOVED MUD FROM ROAD

To make easy transportation of the villages, NSS (National Service Scheme) Students cleared the wet mud from road of the villages.



## INSTITUTIONAL SOCIAL RESPONSIBILITY (ISR)



## 2. EDUCATION

"Education is the movement from darkness to light."

The transition of the ancient world into a contemporary world was driven largely by the enlightening wave of education. Education was the impetus which propelled the man to dispel the darkness of ignorance and step into the light of knowledge and understanding. It instilled in man the quality of being rational and aware of the things around him.

The biggest contribution we as responsible citizens can render to the holistic growth of our country is to promote education. The despairing reality of our country India is the deprivation of a large section of society from their basic right to education. This noble cause could be achieved by undertaking following measures:-

- 1- To make people aware about the significance of education.
- 2- The government should come out with policies to make the quality of Indian Education System more advanced.
- 3- To promote education, we must strive to make education accessible and feasible.
- 4- The government should enhance the standard of the government schools to provide the students to relevant knowledge.
- 5- The government should promote skill based education in schools and higher educational institutions.

Our little efforts could bring a quite inspiring change in the society and make it a better place to live.

## **INSTITUTIONAL SOCIAL RESPONSIBILITY (ISR)**

### **ACTIVITIES OF EDUCATION**

Under the banner of ISR the team SAMARPAN provide various educational programs to the school children of our villages. These are

1. Govt. School pipariyakalan (co-edu) upto 5<sup>th</sup> class
2. Govt. School pipariya khurd (co-edu) upto 5<sup>th</sup> class
3. Govt. School khamariya(co-edu) upto 8<sup>th</sup> class
4. Neemkheda & Shaliwada (co-edu) upto 12<sup>th</sup> class
5. Gram Bhitoli, Gwarighat

We provided them basic knowledge of computer with computer literacy program, awareness about proper Hindi language on the occasion of Hindi literacy day, basic knowledge of English language with English Literacy Program as well as with the help of maths classes we given them the knowledge of magical maths.

#### **Computer Literacy Program**

To give the basic awareness to all the non-computer students of the school Department of Computer Science and Applications organized Computer Literacy program.



#### **Magical Maths**

To provide the magical power of maths Department of mathematics organized School Teaching program.



## **INSTITUTIONAL SOCIAL RESPONSIBILITY (ISR)**

Place: Saliwada Govt. Higher. Sc. School



### **English Literacy Program**

To provide basics of English language to all Hindi background students Department of English organized English Literacy program.



### **Hindi Literacy Program**

## **INSTITUTIONAL SOCIAL RESPONSIBILITY (ISR)**

To provide the awareness about proper Hindi language, Hindi Department organized a program on the occasion of Hindi Literacy Day.



### **3. ENVIRONMENT**

Various projects have been initiated by our institution in SAMARPAN under the banner of ISR, where every student contributes something. These projects are done to enhance the quality of life of the people in the target villages. Mother Earth that has already lost much of its forestlands- is the major concern of the hour.

#### **ACTIVITIES OF ENVIRONMENT**

Under the banner of ISR the team SAMARPAN conducted various programs to the school, villages as well as our college campus. These are

1. Book Chaining Campaign
2. Tree Plantation & Ornamental Crop Culture Program
3. Vermicomposting
4. Mushroom Cultivation

#### **Book Chaining Campaign**

## INSTITUTIONAL SOCIAL RESPONSIBILITY (ISR)

- Objective of this campaign is “To save our mother nature “. As we all know that books are our true friends. Books are made by pages, and we know that page made by the tree. Many trees are cut to make book bars. To protect its nature, cutting trees should be stopped. Growing demand for book bars has also increased in the



harvesting of trees. With the thought of avoiding cutting trees, we have started Book chaining Campaign. It is a simple give and take of books. In this process students can take any book of their choice as return of this they have to give any old book. Student takes books from seniors and gives these books to juniors as well as from teachers to students and is practised within the college and promoted in other institutions were students visit. School level books distributed as a gift to the village school students.



## Tree Plantation & Ornamental Crop Culture Programme



## INSTITUTIONAL SOCIAL RESPONSIBILITY (ISR)

As an initiative to make the world a greener place, our college solely or in association with different organization often organizes a couple of Tree Plantation Drives. The purpose of initiative is to grow more and more trees in the campus and the surrounding areas.



The student members of the plantation of rose saplings and many other ornamental seasonal plants in the college garden to enhance the green and clean ambiance of the campus. Around 40 saplings were planted.



## Mushroom Cultivation



Every year the team SAMARPAN with help of Department of Botany and Microbiology conducts workshops and training programmes on Mushroom Cultivation for school and college students. From 2020-2021 a certificate course has been designed for Mushroom Cultivation looking into the



## INSTITUTIONAL SOCIAL RESPONSIBILITY (ISR)

interest of participants. Mushrooms provide several important nutrients and medicinal molecules. Indirectly, mushroom cultivation also provides opportunities for improving the sustainability of small farming systems through the recycling of organic matter, which can be used as a growing substrate and then returned to the land as fertilizer.



Mushroom cultivation can help reduce vulnerability to poverty and strengthens livelihoods through the generation of a fast yielding and nutritious source of food and a reliable source of income. Small-scale growing does not require any significant capital investment. Mushroom substrate can be prepared from any clean agricultural waste material and mushrooms can be produced in temporary clean shelters.

### Vermicomposting

Vermicomposting aims to provide a platform for the development of entrepreneurship skill among the students belonging to both rural and urban background. The internship project was designed on the basis of the fact that the municipal wastes; animal wastes, kitchen scraps, non-toxic solids and liquid waste of the industries and household garbage's can be



earthworms into Vermicompost and the multiplication of earthworms are simple process

converted into environment friendly, useful and valuable product like Vermifertilizer of economic importance.

It is useful for crop production and also alongside helps to maintain a healthy environment .Conversion of garbage by



## **INSTITUTIONAL SOCIAL RESPONSIBILITY (ISR)**

and can be easily handled by the students, farmers as well as by the inhabitants of urban society.

Vermicompost contains seven times the available potash found in topsoil, as well as five times the available nitrogen and 11 times more calcium delivered gently in organic form to the plants. It does not have any adverse effect on soil, plant and environment. It improves soil nutrition, aeration and texture, thereby reducing soil compaction.

It improves water retention capacity of soil because of its high organic matter content. It has a growth-promoting humic substance or phyto-hormone that accelerates root development and increases crop yield. It lessens pollution, as chemicals are not used and promotes sustainable development. Above all additional income can also be generated from sale of excess earthworms and Vermicomposting produced.

### **Experimental Design for Vermicomposting**



STEP-1 Preparation of Vermibed

STEP-2 Collection of Wastes

STEP-3 Semi -Decomposition of Organic Wastes

STEP-4 Stocking of Earthworms

STEP-5 Decomposition of Organic Wastes

## **4. HEALTH (HEALTH AND HYGIENE)**

Number of programs was carried out in the year 2019, under Awareness and Training Camps on Health and Hygiene. These awareness camps made people realize the importance of using a toilet. This brought in an increased form of sanitary sense and hygiene awareness amongst the targeted urban and rural areas.

Also programs that consist of Yoga and Meditation awareness measures specially designed for socially, economically or physically challenged sections of the society has carried out, to help in improving mental and physical health of people.

Swachha Bharat mission- with aim of making the surrounding areas Defecation Free Areas, the college witnessed a wide range of participation. A door to door survey has also conducted

## **INSTITUTIONAL SOCIAL RESPONSIBILITY (ISR)**

wherein a detailed questionnaire was designed to capture the need for toilet facilities and sanitation in the community.

### **ACTIVITIES OF HEALTH (HEALTH AND HYGIENE)**

Under the banner of ISR the team SAMARPAN provide various health awareness and health check-up programs to the school children of our villages as well as our college campus. These are

1. Blood Donation Camp
2. Health Awareness Camp
3. Awareness Program On Aids
4. Envisioning A Healthy India: Health, Hygiene, Mother And Child

#### **Blood Donation Camp**

The team SAMARPAN organized Blood Donation Camp with the help of NSS, NCC Volunteers & Red Ribbon Club students. They are also participated in blood donation. In this activity Total 252 students donated blood.



#### **Health Awareness Camp**



## **INSTITUTIONAL SOCIAL RESPONSIBILITY (ISR)**

The team SAMARPAN organized Health Awareness Camp, where, the hemoglobin percentage of 66 girl students of underprivileged society was checked.



## **Awareness Program on Aids**

Under the banner of ISR team SAMARPAN organized a youth awareness camp about the HIV/AIDS. They organized a lecture for class VIII Students to impart knowledge about the myth and facts of AIDS Total 35 students and 06 faculty members benefitted.



## **Envisioning a Healthy India: Health, Hygiene, Mother and Child**

## **INSTITUTIONAL SOCIAL RESPONSIBILITY (ISR)**

The SAMARPAN team with Science and Religion club organized a seminar from 21st to 24th February 2019 in the college campus. The main motto of this activity is to create awareness about the present scenario of health and hygiene in India and also discuss the various aspects of mother and child health care.



### **5. SHARING AND CARING (CHARITY)**

“Love is not patronizing and charity isn't about pity, it is about love. Charity and love are the same -- with charity you give love, so don't just give money but reach out your hand instead.”

— Mother Teresa

### **ACTIVITIES OF SHARING AND CARING (CHARITY)**

With these words of Mother Teresa the team SAMARPAN conducted various activities to the school children of our villages as well as our college campus. These are

1. Clothes Distribution Activity
2. Donation of Stationary & Grocery Items
3. Sharing Is Caring-Ek Prayas' & Feed the Need

#### **Clothes Distribution Activity**

## **INSTITUTIONAL SOCIAL RESPONSIBILITY (ISR)**

“Happiness doesn’t result from what we get, but from what we give” by Ben Carson.

Through this activity students learn how to make changes in the world by distributing their old clothes to the needy.



### **Donation of Stationary & Grocery Items**

The students and faculty members donated groceries, woolen clothes, blankets and other articles for the children.



### **Sharing is Caring- Ek Prayas & Feed the Need**

Under the banner of ISR all faculty members of the Department of English visited Sneh-Niketan- A Home for physically and mentally challenged children, Jabalpur, M.P. along with U.G./P.G. students of English Literature on 19 December 2019.

The students and faculty members themselves donated and collected groceries, woollen clothes, blankets and other articles for the children. The especially abled children



## **INSTITUTIONAL SOCIAL RESPONSIBILITY (ISR)**

were the prima-focus so the students baked cakes for them. Chocolates and other eatables were distributed.

The children were overjoyed to receive gifts just before Christmas. They giggled, laughed, talked and played with the students and teachers. The administrators said that the groceries provided, would last more than a month.

It was a wonderful experience for teachers and students so it was decided to conduct such more activities in future as well. As is the name of the activity, 'Sharing is Caring- *Ek Prayas.*' It was truly joyous and satiating.



### **Feed the Need**

Large number of students coming from far off places or hostels or paying guest accommodations come to college without eating anything and suffer from different problems during the classes due to hunger. So, Faculty members of Department of Botany and Microbiology took the initiation of providing nutritive food to the students of the institute.



## **INSTITUTIONAL SOCIAL RESPONSIBILITY (ISR)**



It was very pleasant effort which was largely appreciated by the needy students, as well as other students were motivated and they also came forward to follow this effort and provided different varieties of nutritive and delicious snacks.

### **6. COMMUNITY SERVICES**

In order to put our community services policies into practice, leading various community events. Under the banner of ISR the entire organization and all faculty members shall seek continual improvement by participating in environmental protection activities. These are **ACTIVITIES OF COMMUNITY SERVICES**

- 1. Cycle Rally on Swachhata**
- 2. Mother Teresa Birth Anniversary**
- 3. Skit on Free Polythene Zone**
- 4. Celebration of Religious Unity**

#### **Cycle Rally on Swachhata**

The cadets of Girls BN NCC Jabalpur took a cleanliness rally in the nearby areas of Streets of Sadar. The rally was conducted on the occasion of swachhta Pakhwada. The Cadets interacted with local civilians of the area concerned and talked about what initiative have been taken for the cleanliness drive also the cadets tried to influence, motivate and spread awareness regarding the swachhta campaign initiated by our hon'ble Prime Minister Shri Narendra Modi Ji

## INSTITUTIONAL SOCIAL RESPONSIBILITY (ISR)



## Mother Teresa Birth Anniversary

To commemorate the birth Anniversary of Mother Teresa, extempore competition was conducted. Students participated with great enthusiasm on 26/08/19.





## INSTITUTIONAL SOCIAL RESPONSIBILITY (ISR)

### Skit on Free Polythene Zone

NSS Unit Organized A Skit On Free Polythene Zone In The Campus On 24 Sep 2019.



### Celebration of Religious Unity

Under the JIRF festivals of major religions celebrated Diwali, Eid, Mahavir Jayanti, Christmas, Gurunanak Jayanti to promote universal brotherhood and harmony.



## METHODOLOGY

### Stage I: UG STUDENTS

Every student spends a specified number of hours in fixed work in the adopted villages regarding their activity. The activities include exposure to the realities of rural environment, sensitization to special needs of the local communities.

### Stage II: PG STUDENTS

## **INSTITUTIONAL SOCIAL RESPONSIBILITY (ISR)**

Every PG Students extend their services by identifying their (villagers) problem through survey and resource mapping, designing and executing appropriate project through interaction and participation of the communities and elected leaders of Panchayat and other bodies.

## **CONCLUSION**

SAMARPAN programme develops ecologically sustainable model village and develops rural community which realizes the importance of sustainable development. Above all, the programme facilitates the students to become socially and environmentally conscious leaders who can build the nation and the society at large.