



ST. ALOYSIUS' COLLEGE

(AUTONOMOUS), JABALPUR (M.P.)

Reaccredited 'A+' Grade by NAAC (CGPA 3.68/4.00)

College with Potential for Excellence (CPE) by UGC

DST-FIST Supported

Student Satisfaction Survey Analyser Report

Year 2020-2021

No. of Students participated 506

[Press Here For Questions](#)

1. How much of the syllabus was covered in the class?

[Below 30%](#) [30 to 54%](#) [55 to 69%](#) [70 to 84%](#) [85 to 100%](#)

2. How well did the teachers prepare for the classes?

[Won't teach at all](#) [Indifferently](#) [Poorly](#) [Satisfactorily](#) [Thoroughly](#)

3. How well were the teachers able to communicate?

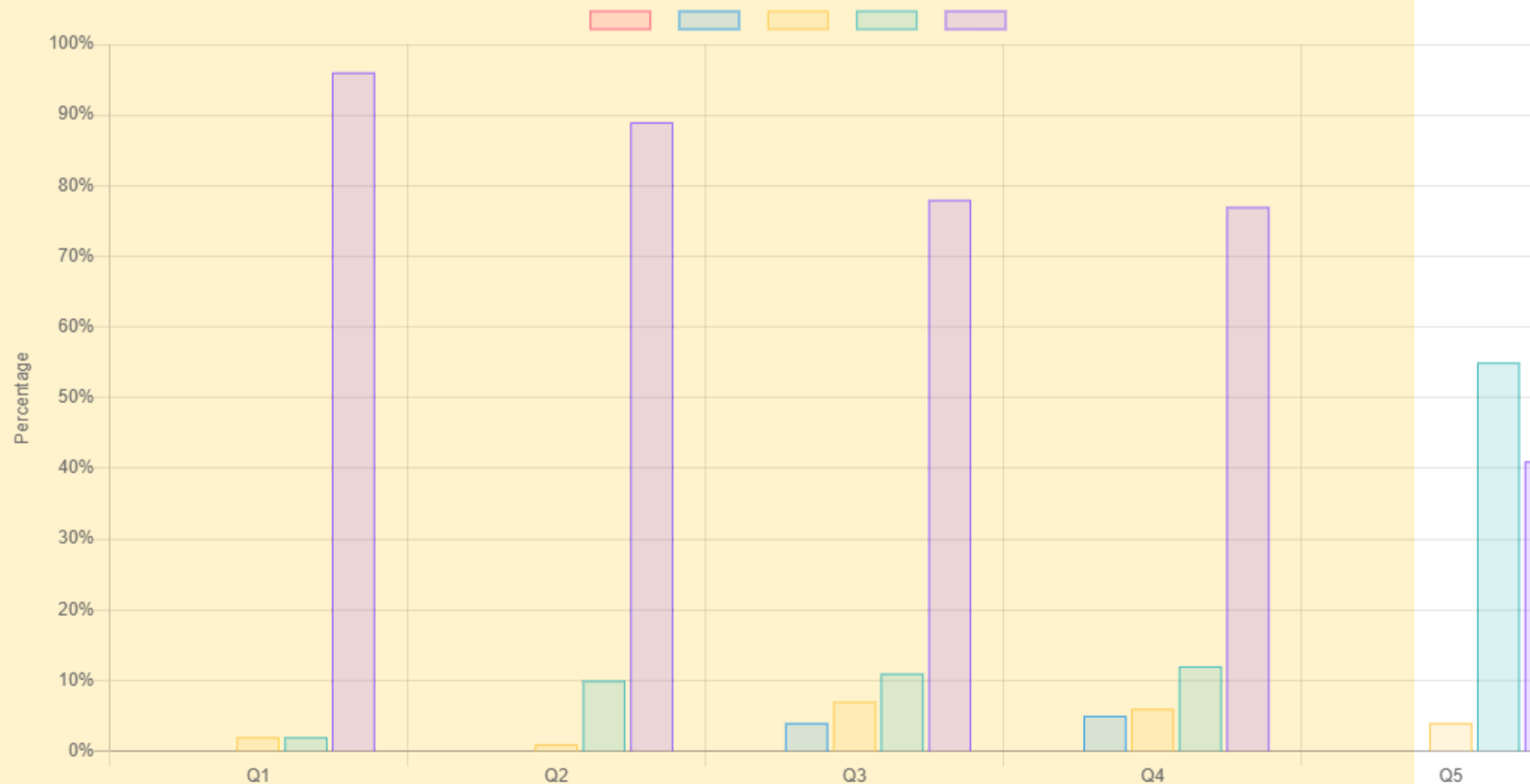
[Very poor communication](#) [Generally ineffective](#) [Just satisfactorily](#) [Sometimes effective](#) [Always](#)

4. The teacher's approach to teaching can best be described as?

[Poor](#) [Fair](#) [Good](#) [Very good](#) [Excellent](#)

5. Fairness of the internal evaluation process by the teachers.?

[Unfair](#) [Usually unfair](#) [Sometimes unfair](#) [Usually fair](#) [Always fair](#)



[Press Here For Questions](#)

6. Was your performance in assignments discussed with you?

[Never](#) [Rarely](#) [Occasionally/Sometimes](#) [Usually](#) [Every time](#)

7. The institute takes active interest in promoting internship, student exchange, field

[Never](#) [Rarely](#) [Sometimes](#) [often](#) [Regularly](#) visit opportunities for students.

8. The teaching or mentoring process in your institution facilitates you in cognitive, social or emotional growth.

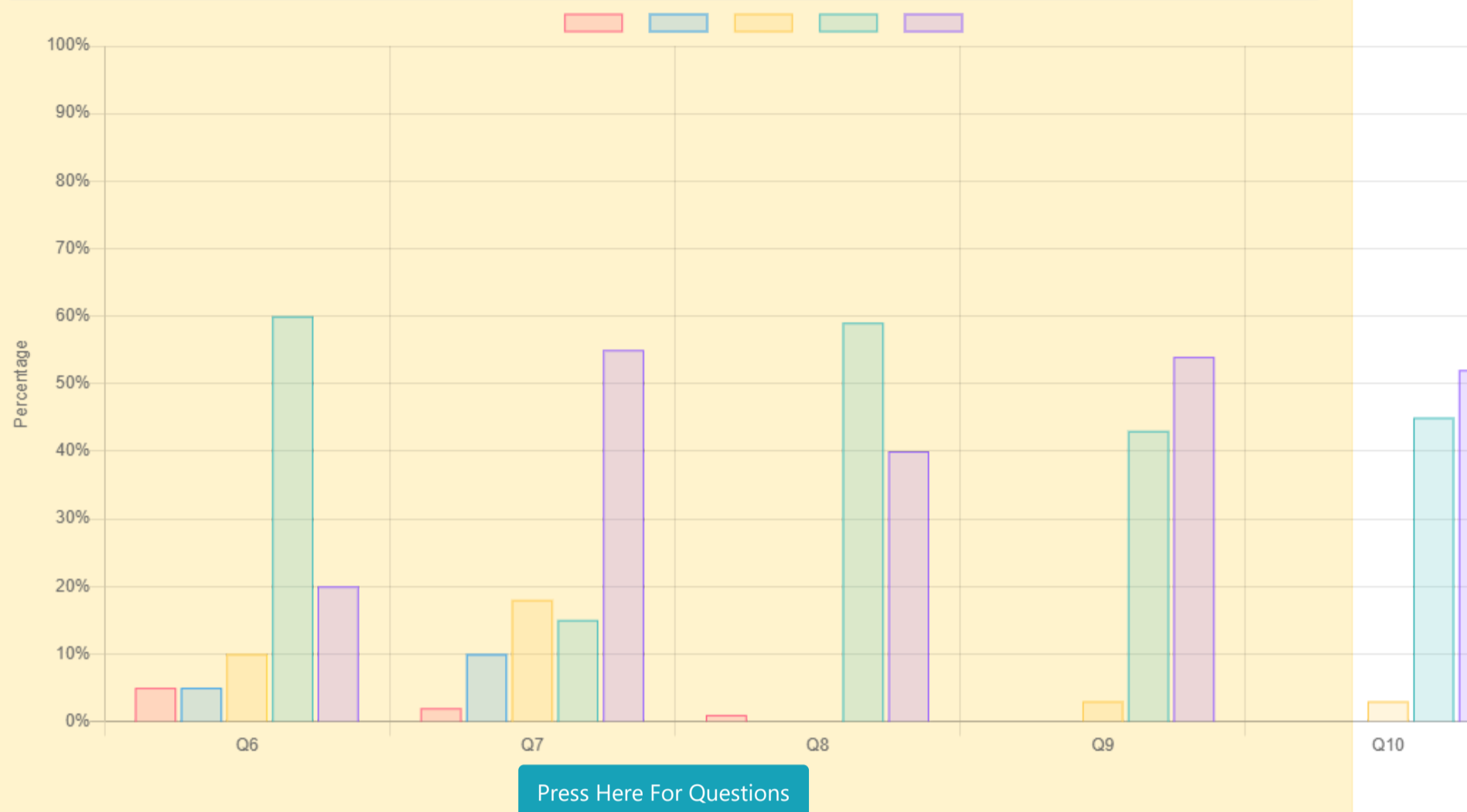
[Not at all](#) [Marginally](#) [Moderately](#) [Very well](#) [Significantly](#)

9. The institution provides multiple opportunities to learn or grow.

Strongly disagree Disagree Neutral Agree Strongly agree

10. Teachers inform you about your expected competencies, course outcomes or programme outcomes.

Never Rarely Occasionally/Sometimes Usually Every time



11. Your mentor does a necessary follow-up with an assigned task to you.?

I don't have a mentor Rarely Occasionally/Sometimes Usually Every time

12. The teachers illustrate the concepts through examples or applications.

Never Rarely Occasionally/Sometimes Usually Every time

13. The teachers identify your strengths or encourage you with providing right level of challenges.

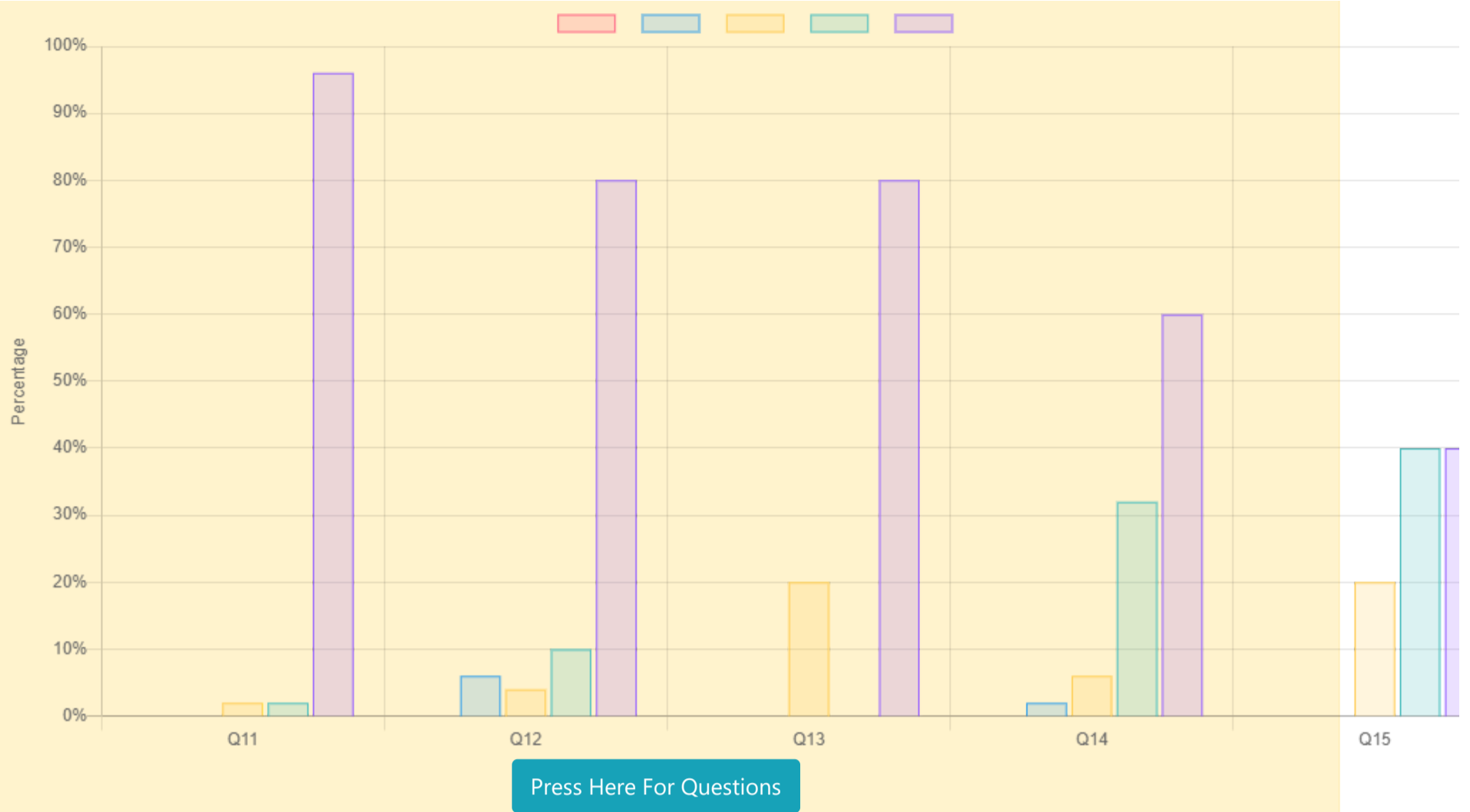
Unable to Slightly Partially Reasonably Fully

14. Teachers are able to identify your weaknesses or help you to overcome them.

Never Rarely Occasionally/Sometimes Usually Every time

15. The institution makes effort to engage students in the monitoring, review or continuous quality improvement of the teaching learning process.

Strongly disagree Disagree Neutral Agree Strongly agree



16. The institute/ teachers use student centric methods, such as experiential learning, participative learning or problem solving methodologies for enhancing learning experiences.

Not at all Very little Some what Moderate To a great extent

17. Teachers encourage you to participate in extracurricular activities.

Strongly disagree Disagree Neutral Agree Strongly agree

18. Efforts are made by the institute/ teachers to inculcate soft skills, life skills or employability skills to make you ready for the world of work.

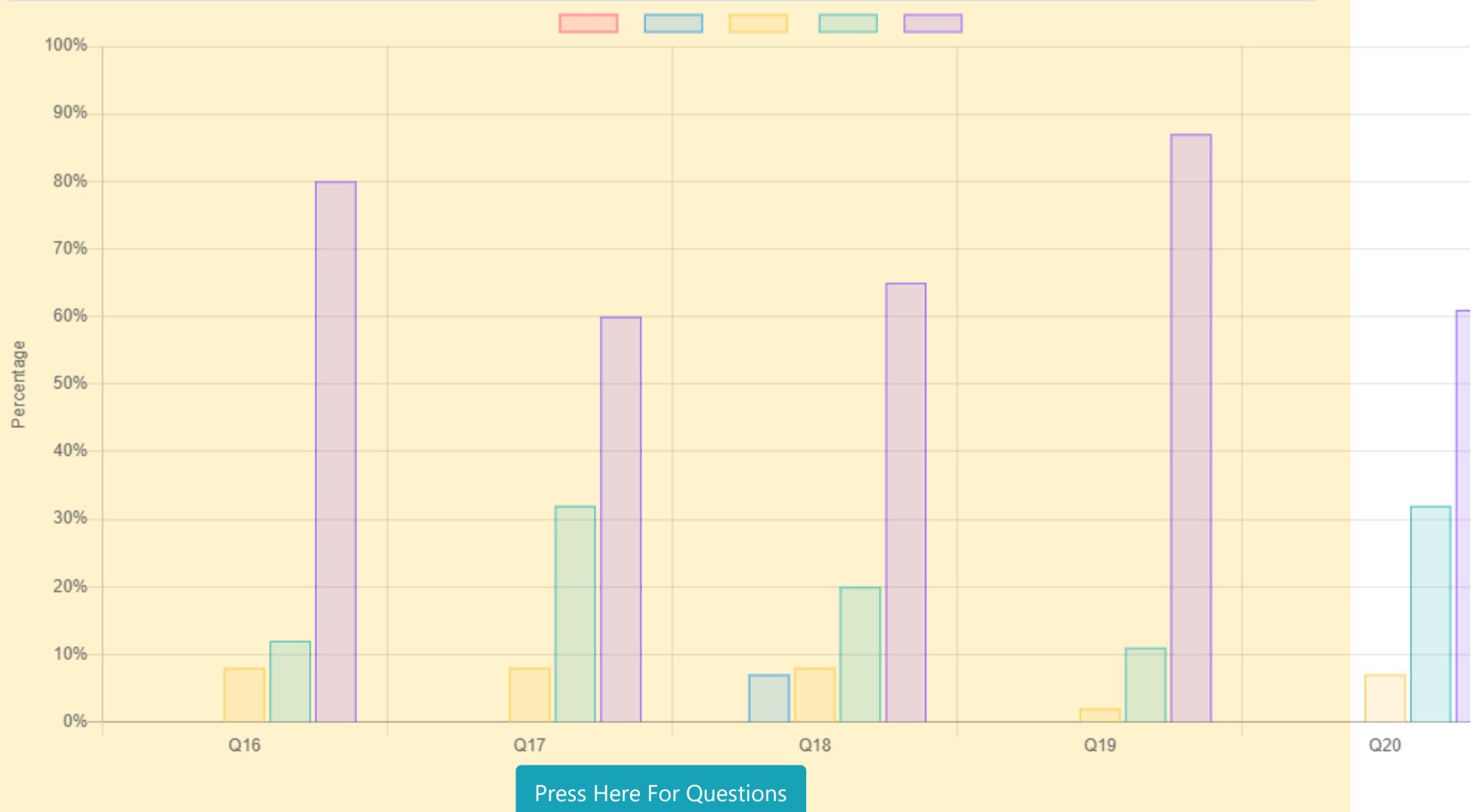
Not at all Very little Some what Moderate To a great extent

19. What percentage of teachers use ICT tools such as LCD projector, Multimedia, etc. while teaching.

Below 29% 30 – 49% 50 – 69% 70 – 89% Above 90%

20. The overall quality of teaching-learning process in your institute is very good.

Strongly disagree Disagree Neutral Agree Strongly agree



22. Is your classroom airy or congenial for learning?

Strongly disagree Disagree Neutral Agree Strongly agree

23. Are you satisfied with the number of books in the library?

Strongly disagree Disagree Neutral Agree Strongly agree

24. Are you satisfied with the lab infrastructure?

Strongly disagree Disagree Neutral Agree Strongly agree

25. Are you satisfied with the canteen?

Strongly disagree Disagree Neutral Agree Strongly agree

